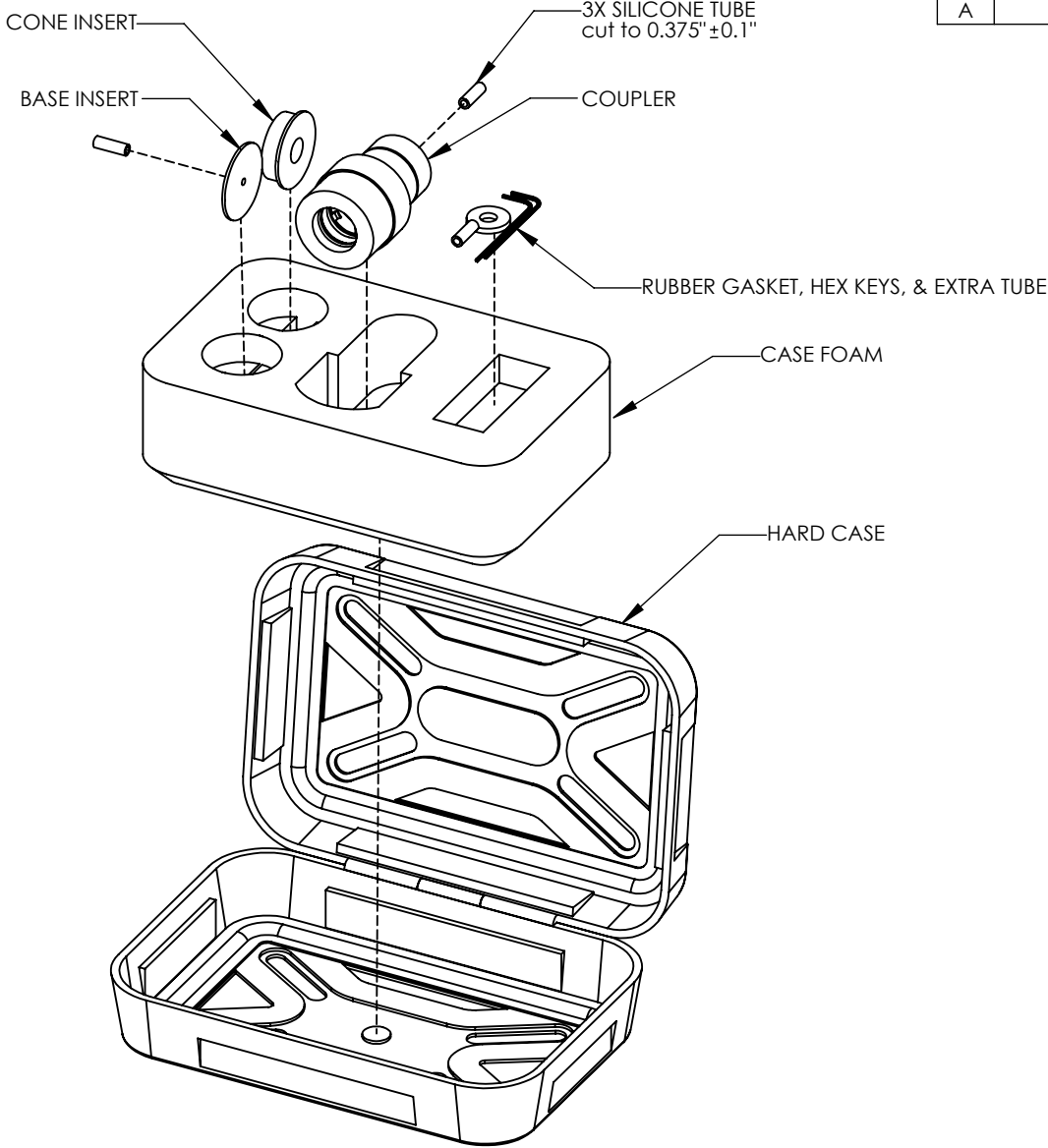


REV.	DESCRIPTION	DATE	BY	ECO
A	INITIAL RELEASE	13 SEP 2013	S. ANDERSON	4245



EXPLODED ASSEMBLY DETAIL



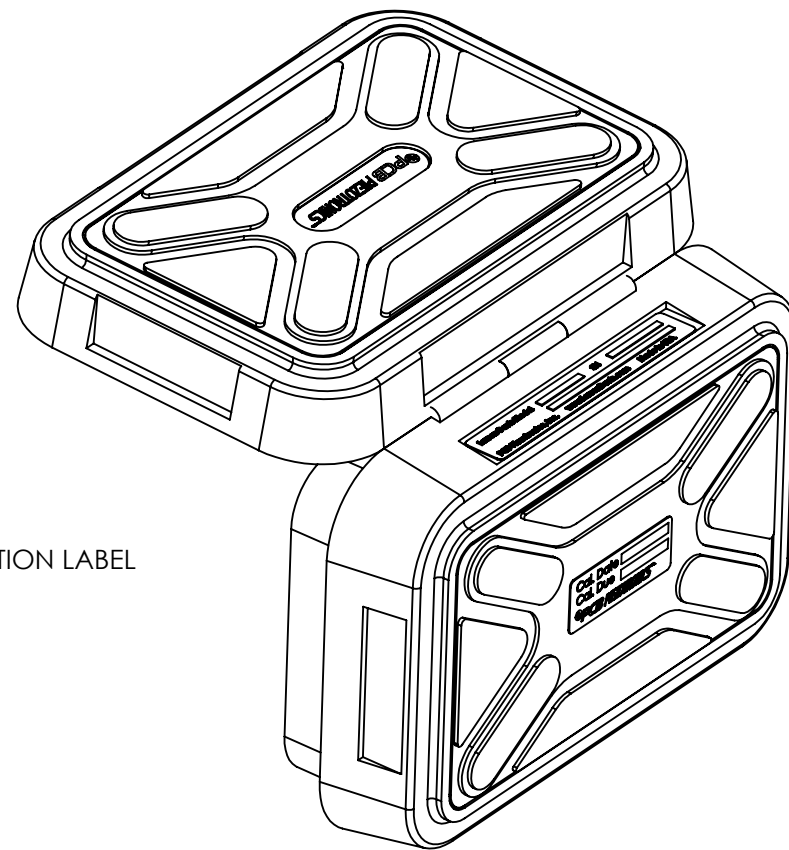
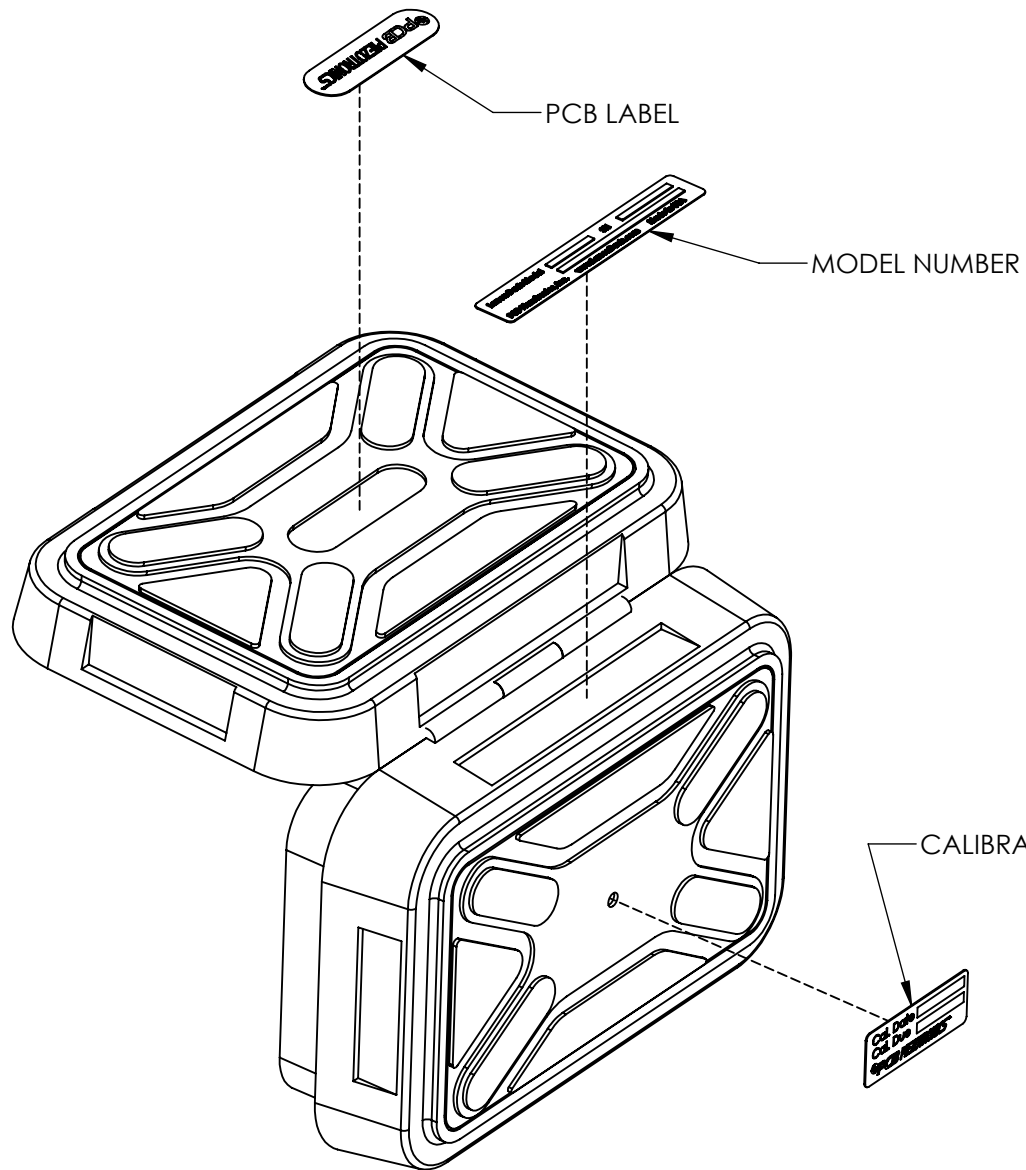
FINAL ASSEMBLY DETAIL

Notes:

1. See BOM provided by PCB for component identification.
2. Insert the Coupler into the foam with the etching facing out.

NAME		DATE	PCB PIEZOTRONICS™ Provo, Utah, USA (801) 375-0177		
DRAWN	K.BOSTWICK	04 DEC 12	TITLE 1/2" 2cc COUPLER		
CHECKED	-	-			
ENGINEER	K. BOSTWICK				
SIGNED					
DATE			SIZE A	NUMBER AEC202	REV. A
SCALE 1:1			WEIGHT	SHEET 1 OF 3	

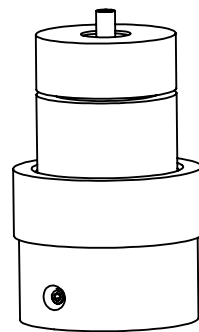
PROPRIETARY AND CONFIDENTIAL THIS DOCUMENT, SUBMITTED IN CONFIDENCE, CONTAINS PROPRIETARY INFORMATION WHICH SHALL NOT BE REPRODUCED OR TRANSFERRED TO OTHER DOCUMENTS OR DISCLOSED TO OTHERS OR USED FOR ANY OTHER PURPOSE WITHOUT THE WRITTEN PERMISSION OF PCB PIEZOTRONICS, INC.



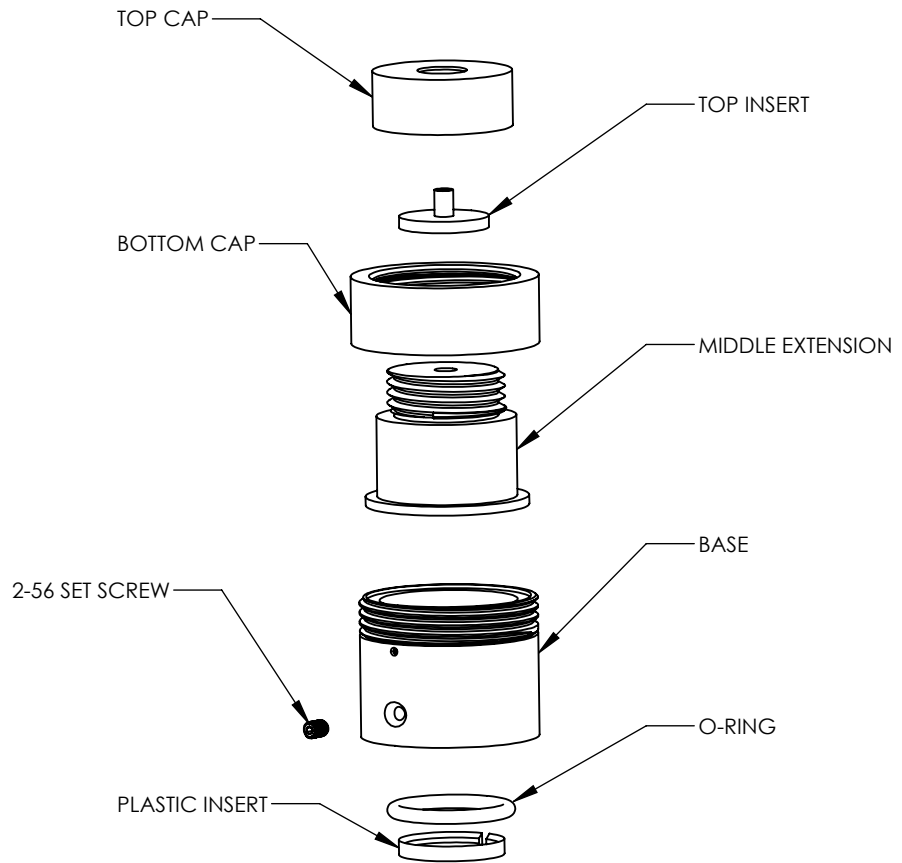
Notes:

1. Orient labels as shown.
2. Label content may not appear as shown.

SIZE	NUMBER	AEC202	REV.
A			A
SCALE 1:1	WEIGHT	SHEET 2 OF 3	



ASSEMBLED VIEW



EXPLODED VIEW

Notes:

1. Deliverable assembly is as shown in Assembled View with top insert. Other adapters are to be delivered unassembled.
2. Assemble Base interior components in the following order:
 - Insert O-ring into upper interior slot
 - Place Plastic insert into lower interior slot
 - Insert set screw without fully tightening
3. Test assembly according to MET/CAL procedure D0001.8312

SIZE A	NUMBER	AEC202	REV. A
SCALE 1:1	WEIGHT	SHEET 3 OF 3	