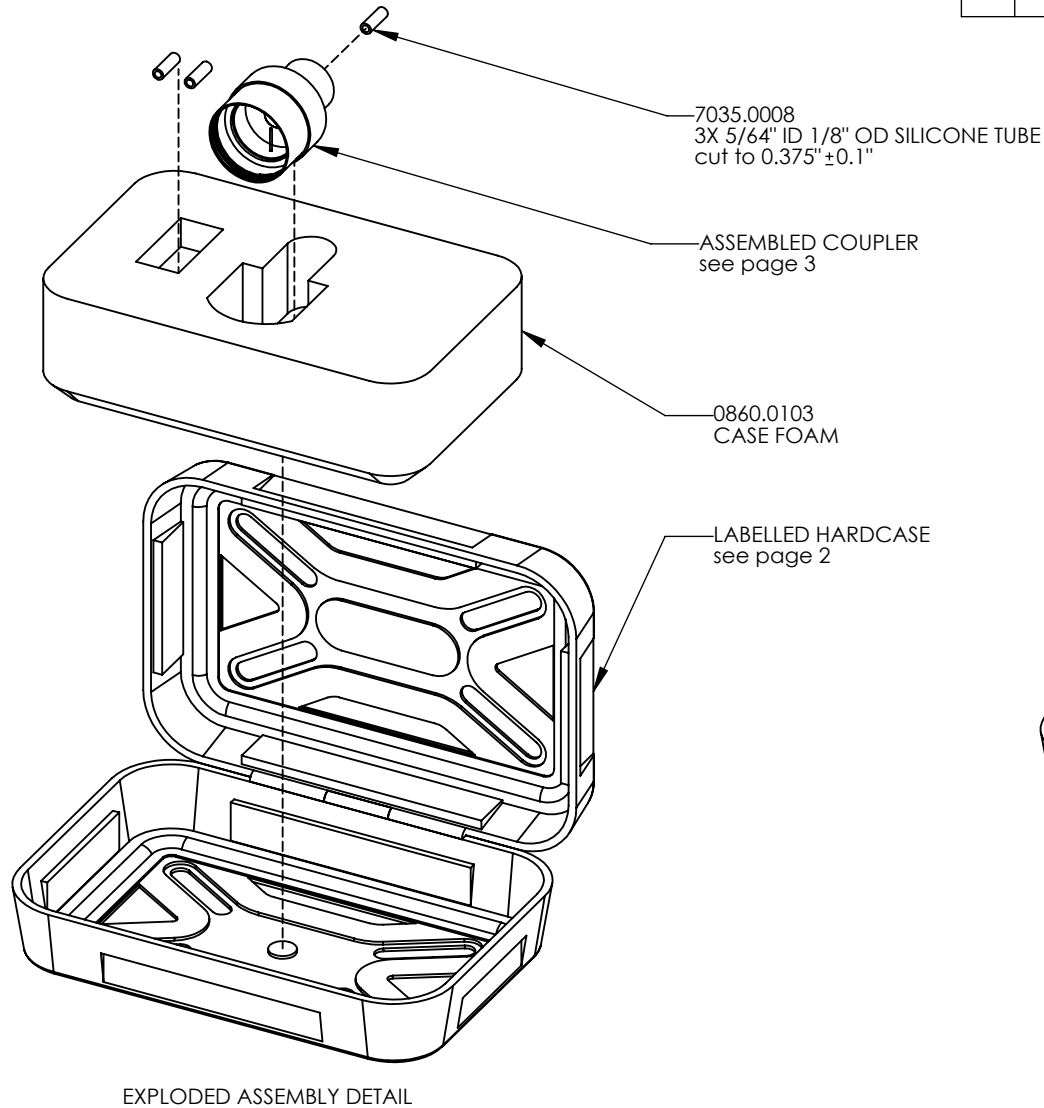



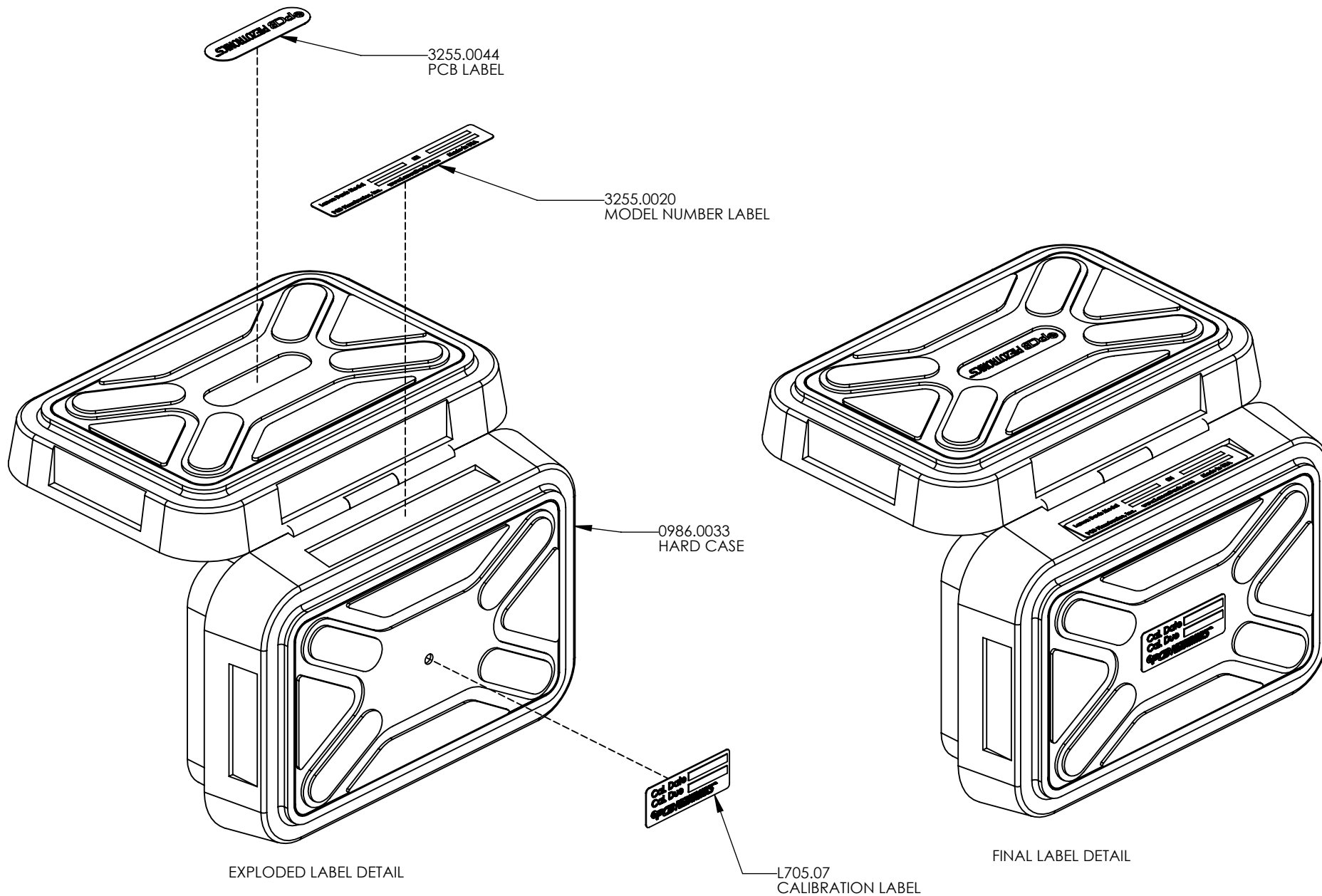
REV.	DESCRIPTION	DATE	BY	ECO
A	INITIAL RELEASE.	17 SEP 2013	K. MARETT	4245
B	CHANGE 3900.0048 TO MAEC103.03	12/13/2016	D. ANDERSON	4510



Notes:

1. See BOM provided by PCB for component identification.
2. Insert the AEC203 into the foam with the etching facing out.

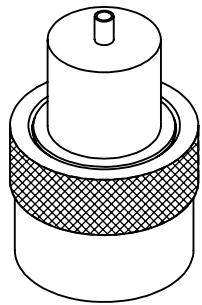
DRAWN		NAME	DATE	 Provo, Utah, USA (801) 375-0177
CHECKED		K. BOSTWICK	05 DEC 12	
ENGINEER		-	-	
SIGNED		K. BOSTWICK		
DATE				TITLE
				1 INCH 2CC COUPLER
SCALE		NUMBER	REV.	
A		AEC203	B	
WEIGHT		SHEET		1 OF 3



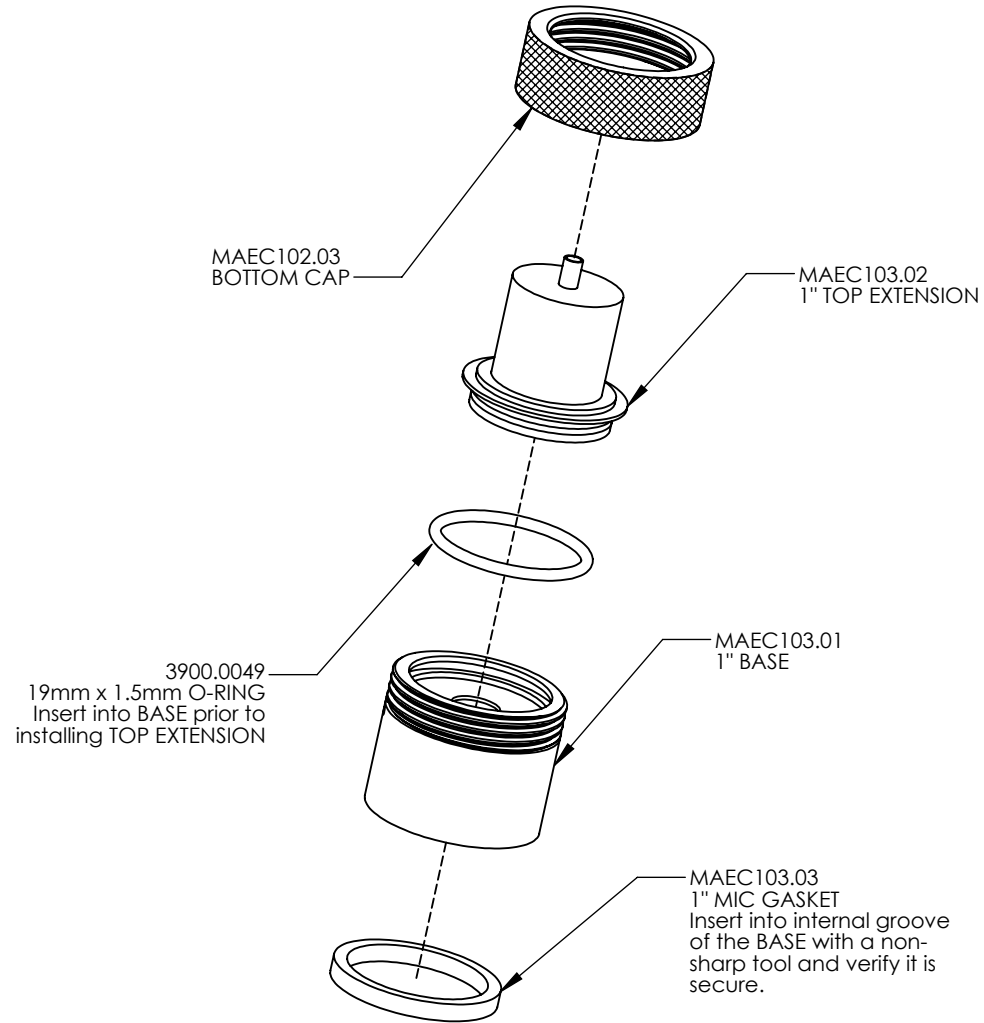
Notes:

1. Orient labels as shown in drawing.
2. Labels may appear different than shown.

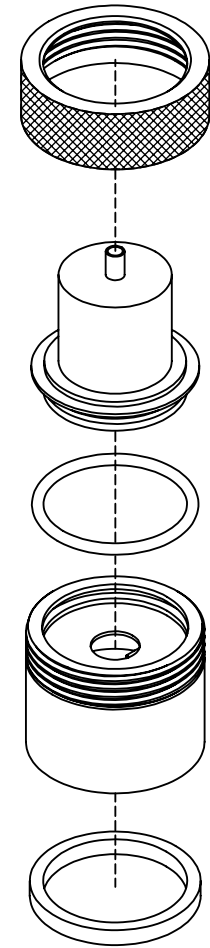
SIZE A	NUMBER AEC203	REV. B
SCALE 1:1	WEIGHT	SHEET 2 OF 3



ASSEMBLED DETAIL



EXPLODED ASSEMBLED DETAIL



EXPLODED DETAIL

Notes:

1. Test assembly according to Metcal procedure D0001.8312.

SIZE A	NUMBER AEC203	REV. B
SCALE 1:1	WEIGHT	SHEET 3 OF 3