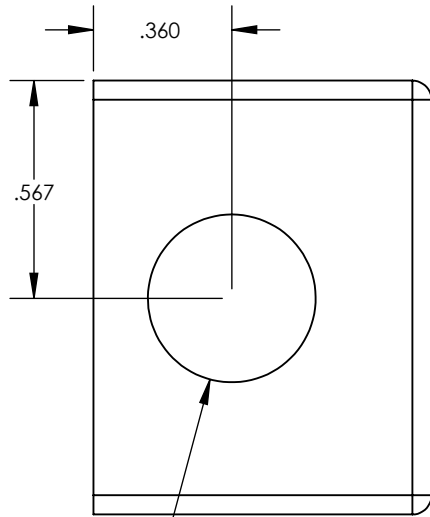


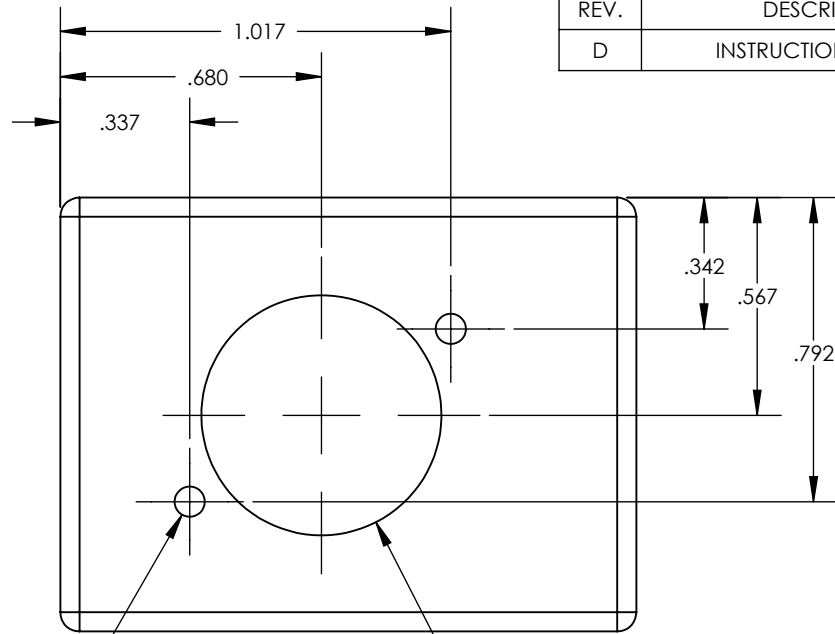
REV.	DESCRIPTION	DATE	BY	ECO
D	INSTRUCTION UPDATES	7/26/2018	D. WILDING	4851

SWITCHCRAFT CONNECTOR SIDE



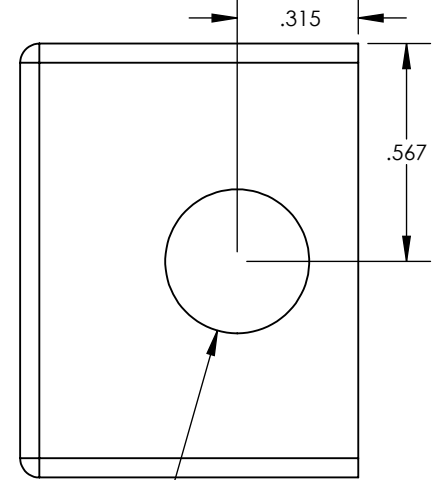
PRE-DRILL USING #47 DRILL BIT
M2.5 X .45 TAP
2 PLACES

Ø .437
DRILL TO 7/16" WITH STEP BIT

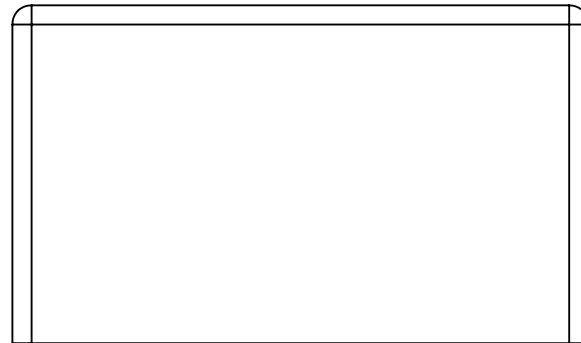


Ø .625
USE 5/8" BIT

BNC CONNECTOR SIDE



Ø .375
DRILL TO 3/8" WITH STEP BIT



Notes:

- All equivalencies must be approved by PCB Engineering.
- All components and processes must be ROHS compliant.
- First article to be approved by PCB Engineering.
- Use T0976.0004 alignment tool with automatic center punch to position holes for drilling.
- Use touch up paint for any chips that occur during drilling process.

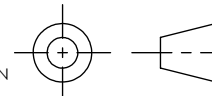
- DIMENSIONING & TOLERANCING ARE GIVEN IN ACCORDANCE WITH ASME Y14.5M-2009.
- QUERY CAD FILE FOR UNSPECIFIED DIMENSIONS.
- UNLESS SPECIFIED:
 - UNTOLERANCED DIMENSIONS ARE BASIC.

	0.010	A	B	C
	Ø0.010	A	B	C

B. DIMENSIONS ARE IN INCHES.

C: FINISH: 32^{μ}

D: 3rd ANGLE PROJECTION



Provo, Utah, USA (801) 375-0177

TITLE
MODIFIED DIE CAST BOX

PROPRIETARY AND CONFIDENTIAL THIS DOCUMENT, SUBMITTED IN CONFIDENCE, CONTAINS PROPRIETARY INFORMATION WHICH SHALL NOT BE REPRODUCED OR TRANSFERRED TO OTHER DOCUMENTS OR DISCLOSED TO OTHERS OR USED FOR ANY OTHER PURPOSE WITHOUT THE WRITTEN PERMISSION OF PCB PIEZOTRONICS, INC.

MATERIAL ITT POMONA 3753 BLUE DIE CAST AL BOX

AUTHOR L. HARBAUGH DATE 9/27/2018

SIZE NUMBER AM0976.0004 REV. D

SCALE 2:1 SHEET 1 OF 1