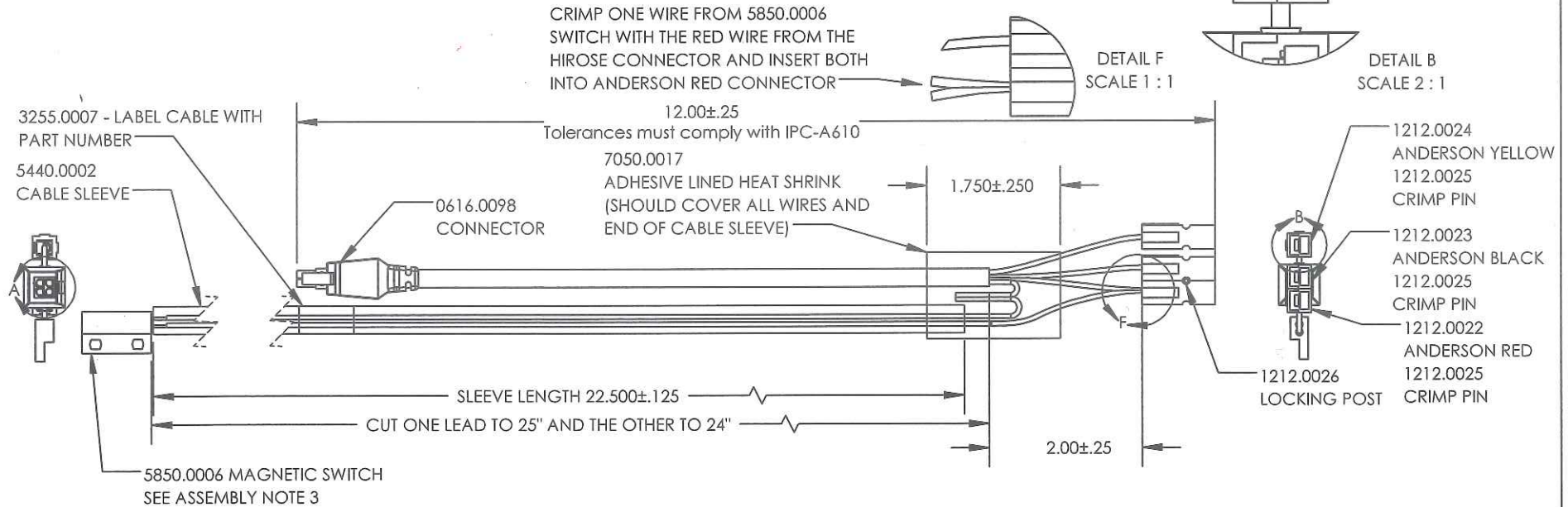


# LEAD FREE

REV.	DESCRIPTION	DATE	BY	ECO
A	INITIAL RELEASE	11/29/2017	D. WILDING	4652

*A-1 Test instruction 8/19/2019 Q. Anderson*

0616.0098 HIROSE	ANDERSON RED	ANDERSON BLACK	ANDERSON YELLOW	5850.0006 SWITCH
RED	CONNECT	N/C	N/C	CONNECT to 25" Lead
BLACK	N/C	CONNECT	N/C	N/C
WHITE	N/C	N/C	CONNECT	N/C
GREEN	N/C	N/C	N/C	SOLDER to 24" Lead



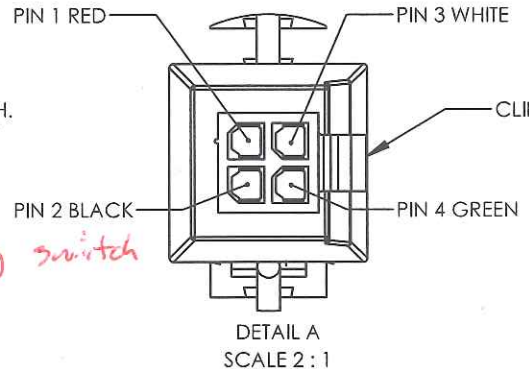
### ASSEMBLY NOTES:

- CUT THE CABLE AND EXPOSE 2" OF ALL WIRES. STRIP THE WIRES BACK 5/16".
- FOR CABLING ASSEMBLY REFER TO THE CONNECTION TABLE AND ABOVE DETAIL INSTRUCTIONS.
- EITHER WIRE MAY BE USED FOR EACH CONNECTION FROM 5850.0006 SWITCH.
- FOR ASSEMBLY OF THE ANDERSON CONNECTORS CONSULT THE DOCUMENT THAT IS IN THE 1212.0025 BOX IN STORES. IF INFORMATION IS MISSING CONSULT ONLINE INFORMATION ON ASSEMBLY.
- TEST THE PINOUT BY TONING THE WIRES TO THE ABOVE TABLE PINOUT.

*use a magnet to trigger the mag switch*

### Notes:

- All equivalencies must be approved by PCB Engineering.
- All components and processes must be ROHS compliant.
- First article to be approved by PCB Engineering.
- Dimensions are in inches.



PROPRIETARY AND CONFIDENTIAL THIS DOCUMENT, SUBMITTED IN CONFIDENCE, CONTAINS PROPRIETARY INFORMATION WHICH SHALL NOT BE REPRODUCED OR TRANSFERRED TO OTHER DOCUMENTS OR DISCLOSED TO OTHERS OR USED FOR ANY OTHER PURPOSE WITHOUT THE WRITTEN PERMISSION OF PCB PIEZOTRONICS, INC.  
COPYRIGHT © PCB PIEZOTRONICS, INC. FILE NAME: CBL231 Cable, Power Sierra Wireless to Anderson, Intrusion

AUTHOR  
D. WILDING  
DATE  
10/19/2017

**PCB PIEZOTRONICS**  
Provo, Utah, USA (801) 375-0177

TITLE  
CABLE, POWER SIERRA WIRELESS TO ANDERSON, INTRUSION SWITCH

SIZE NUMBER  
A CBL231

SCALE 1:2

REV. A

SHEET 1 OF 1