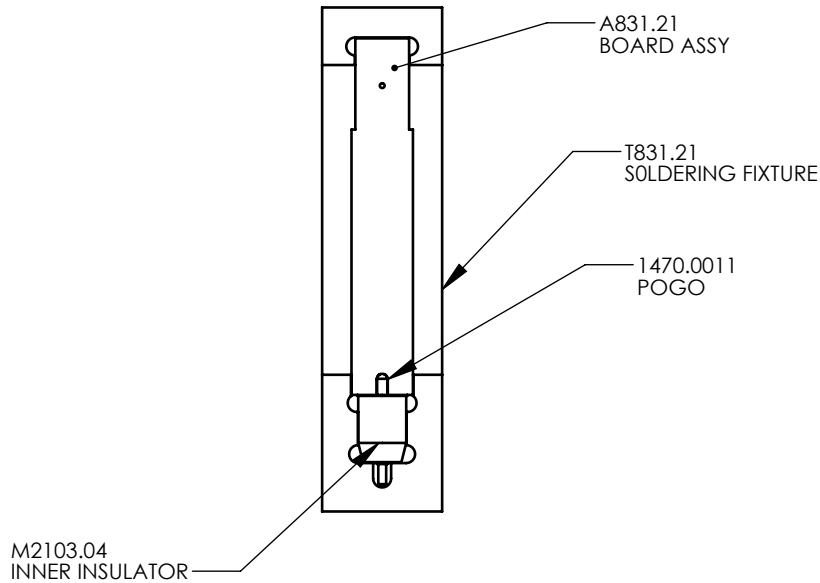


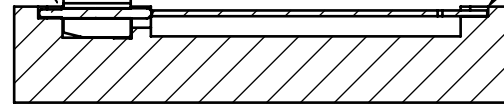
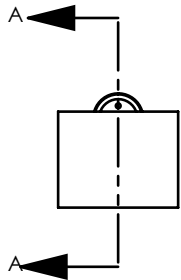
REV.	DESCRIPTION	DATE	BY	ECO
B	ADDED NOTE ABOUT WRAPPING WIRE	12/06/05	JD	3332
C	CHANGED WIRE GAUGE	8/11/2006	LH	3438
D	M1145.0005 WAS 1145.0005	2/26/2007	CT	3509
E	CHANGED 20 AWG TO 24 AWG WIRE	3/30/2012	KCM	4100
F	CHANGED PART NUMBER 7252.0020 TO 7252.0024BUS	09/13/2012	WS	4133
G	CHANGED M906.01 TO M2103.04	12/03/2013	KCM	4274



1. NON-SPRING LOADED SIDE OF POGO
SLIDES INTO INNER INSULATOR FROM THIS
SIDE, STOPS AT SHOULDER (0.01)

3. INNER INSULATOR IS
HELD AT FRONT AND BACK

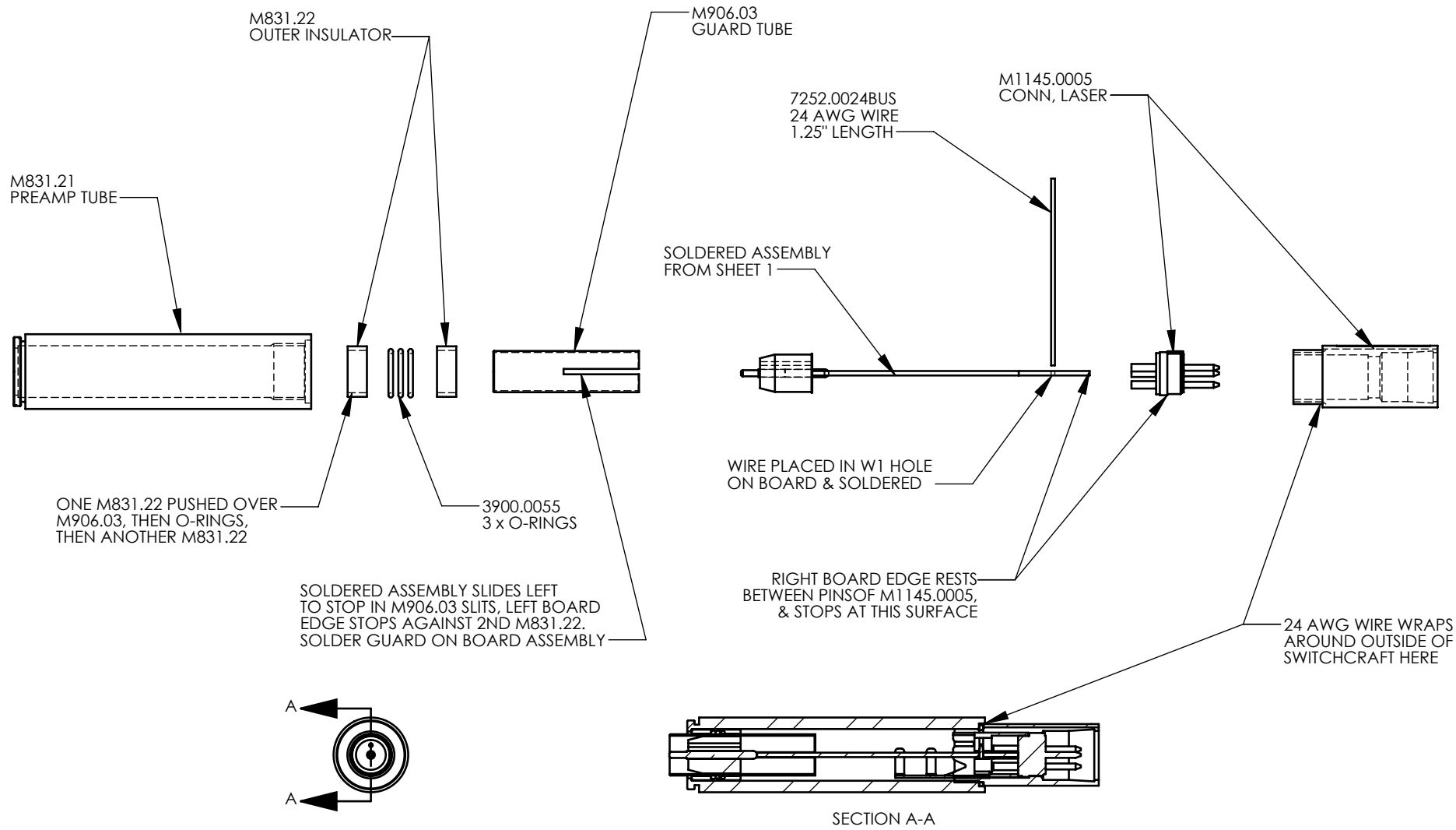
4. BOARD SHOULD REST
AGAINST END OF FIXTURE



SECTION A-A

NAME		DATE	PCB PIEZOTRONICS™ Provo, Utah, USA (801) 375-0177		
DRAWN	JD	9/06/05			
CHECKED	-	-	TITLE PRM831 SOLDER ASSY		
ENGINEER	L.HARBAUGH				
SIGNED					
DATE	SIZE A	NUMBER S831.21	REV. G		
SCALE 1:1				SHEET 1 OF 2	

PROPRIETARY AND CONFIDENTIAL THIS DOCUMENT, SUBMITTED IN CONFIDENCE, CONTAINS PROPRIETARY INFORMATION WHICH SHALL NOT BE REPRODUCED OR TRANSFERRED TO OTHER DOCUMENTS OR DISCLOSED TO OTHERS OR USED FOR ANY OTHER PURPOSE WITHOUT THE WRITTEN PERMISSION OF PCB PIEZOTRONICS, INC.



NOTES:

1. ALL COMPONENTS ARE CONCENTRIC.

SIZE A	NUMBER S831.21	REV. G
SCALE 1:1	SHEET 2 OF 2	